

Automatic rail disk saw

Robokatta RDS-14P-AA

Presents a new concept in Rail Disc Saws by combining a powerful and robust Saw with the worlds first Automatic Support Arm which, during the cutting phase, allows the operator to be in control but away from the machine and therefore subject to: Designed for precise cutting, Robokatta Automatic Rail Disc Saw has the perfectly perpendicular action essential for making the consistently accurate right-angle cuts in both axes that are fundamental to the reliability of isolated joints in automatic signalling systems. For traditional Manual operation, the alternative two-joint Support Arm combines simplicity with precision and minimises the working weight of the Saw for the operator.

Art.no.	Title	Type
99 26 05	AA-RDS automatic arm	TTIVO AA-RDS
99 26 00	RDS-14P robokatta without arm	RDS-14P SENZA BRACC.
99 26 03	SA-RDS manual arm	TANDARD SA-RDS
99 26 09	VAL AA-RDS wooden box	VAL AA-RDS
99 26 08	VAL RDS wooden box	VAL-RDS
99 26 07	SSR1 stabilization for cutting short lengths	SSR1
99 26 11	Cutting disc CRD4387 : 355 x 22,2mm	CRDL4387
99 26 10	Cutting disc CRD4381 : 355 x 25,4mm	CRDL4381
99 26 13	Cutting disc CRDL6407 : 406 x 22,2mm	CRDL6407
99 26 12	Cutting disc CRDL6401 : 406 x 24,4mm	CRDL6401

Functions

In both manual and automatic modes, Robokatta offers tremendous advantages over other rail saws including:

- “Expert operator” cutting times and accuracy obtained due to:
 - Rigorously engineered support arms
 - Patented self-adjusting belt tension system
- Speed control to optimise disc performance, minimising consumption and consequently delivering the greatest number of cuts
- Elastic system for vibration damping
- One-piece disc support arm and hub coupled to the fixing arm provides maximum rigidity and cutting precision
- Metallic disc protection casing with angular regulation device is not affected by vibration, so assures operator security and optimum visibility
- Transportation handle designed to assist motor protection
- Automatic switch off at end of cut
- Automatic alarm for air filter cleaning
- Switch off the machine or reset the air filter cleaning alarm via the Auxiliary Switching Device supplied.



HSE-friendly

- No vibration
- No physical effort
- No harmful dust
- No sparks
- No exhaust fumes
- Minimum of acoustic noise

[Film on YouTube](#)

Accessories, ROBOKATTA

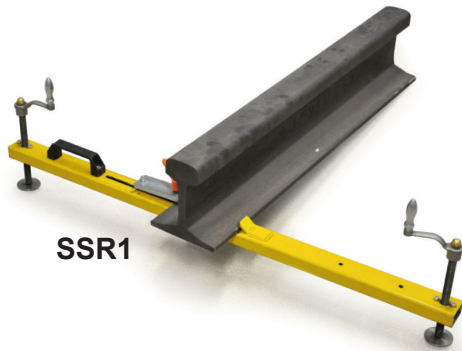
Technical characteristics

- **Husqvarna 2-stroke engine** with electronic start and 5 stage air filter; 7.9 HP (5.8 kW) at 9750 rpm
- **Pulley transmission** with centrifugal clutch and trapezoidal tooth belt
- **Tank capacity:** 1,25 l
- **Cutting disc diameter:** 350/400 mm (14 - 16 in.)
- **Disc support shaft diameter:** 25,4 mm (1 in.)
- **Dimensions (without disc)**
 - Length: 798 mm
 - Width: 285 mm
 - Height: 440 mm
- **Weight:**
 - Without support arm: 19 kg
 - Weight of manual support arm: 8,5 kg
 - Weight of automatic support arm: 19,8 kg

RDS-14P Rail disc saw



External switch unit



SSR1



Cutting discs



VAL AA-RDS and RDS wooden boxes

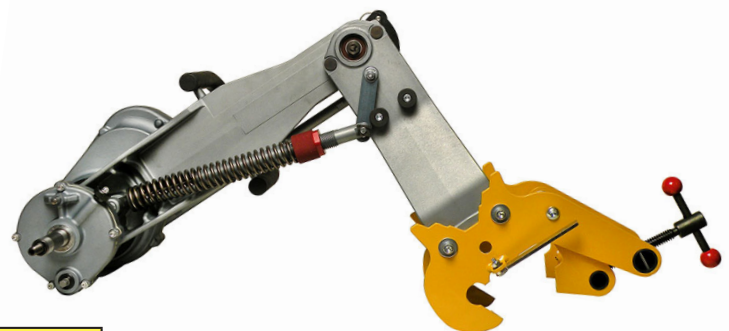
AA-RDS support arm

Powered by the rail saw engine to simulate the movement of a skilled operator during the cutting phase

- Original clamp configuration for better and safer coupling to the rail being cut
- Exact cutting position indicator integrated into the clamp
- Ability to invert the rail saw easily and quickly to continue cutting on the other side of the rail, without relocating the clamp and support arm
- Arm joint supported by shielded bearings & assembled with no end float to ensure precision when cutting from both sides of the rail
- May be blocked in "Hold" position to simplify rail saw location and start-up operations
- Can be switched to manual mode.



SA-RDS Manual arm



AA-RDS Automatic arm

Art.no.	Title
99 26 05	AA-RDS automatic arm
99 26 03	SA-RDS manual arm