

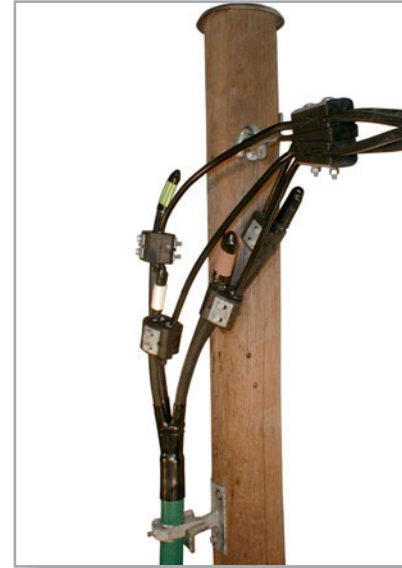
# SEAL

## End termination for 3- and 4-core 1 kV plastic insulated cable

Seal consists of shrink termination, color marks for the phases, 2.8 m phase-tube and end caps for the phases.

UH Seal consists of shrink termination, color marks phases, 2.8 m phase tube.

- Seals the cable end and prevents water intrusion
- Prevents the cable's phase insulation from crumbling when it is exposed for sunlight
- Prevents oxidation of aluminum conductors



### Seal with end caps

El.no	Title	Cross section range mm <sup>2</sup>
11 315 31	SEAL 3/4 x 16-95	16-95
11 315 32	SEAL 3/4 x 95-240	95-240

### Seal without end caps

El.no	Title	Cross section range mm <sup>2</sup>
11 318 10	SEAL UH 3/4 x 16-95	16-95
11 318 11	SEAL UH 3/4 x 95-240	95-240