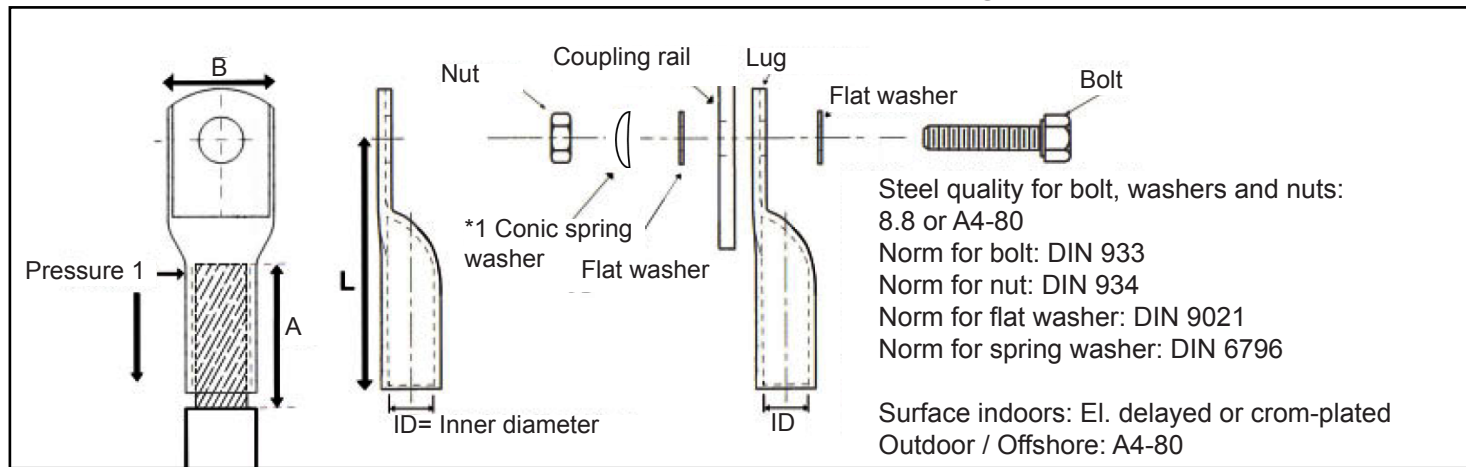


## Measurements and recommendations for lugs KHD (DIN 46235)



Cross section mm <sup>2</sup>	Lugs title	Pressure dies Codeno.(KZ) acc. to DIN 48083 Teil-1-4	ID mm	Conductor dia. min. mm *2	Conductor dia. max mm	L mm	B Max. mm	A Stripping conductor mm	Min. rec. fixing *3	Torque dry threads Nm		*4 Torque greased threads Nm
										8,8 stål	A4-80 stål	A4-80 stål
25	KHD 25	10	7	5,9	6,7	38	18	25	M6	16	Not recommended	16
35	KHD 35	12	8,2	7	7,9	42	21	25	M8	16		16
50	KHD 50	14	10	8,1	9,7	52	24	35	M8	16		16
70	KHD 70	16	11,5	9,7	11,2	55	24	35	M8	16		16
95	KHD 95	18	13,5	11,4	13,2	65	28	45	M8	16		16
120	KHD 120	20	15,5	12,9	15,2	70	31	45	M10	31		31
150	KHD 150	22	17	14,3	16,7	78	34	50	M10	31		31
185	KHD 185	25	19	16	18,6	82	37	50	M12	50		50
240	KHD 240	28	21,5	18,3	21,1	92	42	55	M12	50		50
300	KHD 300	32	24,5	21,1	24,1	100	48	60	M12	50		50
									M14	80		80
									M16	115		115
400	KHD 400	38	27,5	23,3	27,0	117	55	85	M16	115		115
500	KHD 500	42	31	26,3	30,5	130	60	85	M16	115		115
630	KHD 630	44	34,5	29,3	34,0	135	63	95	M16	115	115	
									M20	240	240	

\* 1 Supplier washer: for example Wurt or Tingstad

\* 2 Minimum head diameter is for stranded conductor (IEC 60228-C1 class 2).

\* 3 All lugs are available in several sizes of bolt-hole.

\* 4 Lubricate with for example Molykote G-Rapid + (Supplier: Wurt)

Follow torque acc. to bolt size, where this is not specified in the table.