

# Mechanical ferrules 1 kV

## Type Nexans (GPH)

The screw has an inner and outer hexagon shape. Both are related to the torque at different cross-sections, see installation instructions accompanying the product.

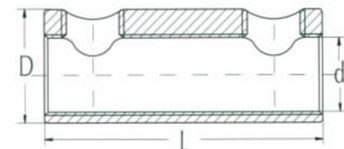
It can be used an electric impact wrench from Makita Asco Compact , see el-number below the table. It is tested against mechanical ferrules supplied by Nexans GPH at sizes up to 240 mm. Manual tool can also be used, thus with a mothold-tool.



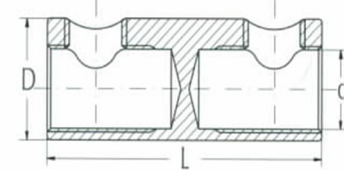
Tightening always starts with the screw that is closest the insulation on the cable, then tighten the next one and keep repeating until the bolts fall off. If there are some parts of the bolts left after tightening, simply use a file to remove leavings.

For smaller cross section center-rings should be used, which follow the kit. See Installation description, for when and what size of ring should be used.

MS=>Brass SV=>Alu Alloy SV-V-..=>Tin-plated  
SV-K-... => 2 Bolts SV-S-...=> Inspection hole  
SE-T-... => With oil stop



(without oil stop)



(with oil stop)

El. no.	Title	Al-Round mm <sup>2</sup>	AL-Sector mm <sup>2</sup>	Cu Round mm <sup>2</sup>	Length mm	Outer diameter mm
20 199 55	416 MS-S-V-K	x	x	2,5-16	40	12
20 199 56	625 SV-S-V-K	16-35	16-25	10-25	40	17
20 199 34	25150 SV-V-K	25-150	25-120	25-120	70	28
20 203 15	25150 SV-T V-K	25-150	25-120	25-120	70	28
20 199 35	150300 V K	150,300	150-300	95-300	110	38
20 199 57	150300 T-V-K	150-300	150-300	95-300	120	38

Other sizes on request, tel: 32 23 77 00, ProCab AS.