

Mechanical cable lugs

Mechanical cable lugs 1-42 kV Type Nexans (GPH)

We also supply Sicon cable lugs, ask us for price and delivery information

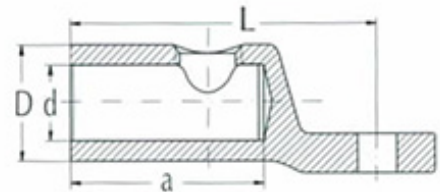
The screw has an inner and outer hexagon shape. Both are related to the torque at different cross-sections, see installation instructions accompanying the product.

It can be used an electric impact wrench from Makita Asco Compact , see el-number below the table. It is tested against mechanical ferrules supplied by Nexans GPH at sizes up to 240 mm. Manual tool can also be used.

Tightening always starts with the screw that is closest the insulation on the cable, then tighten the next one and keep repeating until the bolts fall off.

If there are some parts of the bolts left after tightening, simply use a file to remove leavings.

For smaller cross section center-rings should be used, which follow the kit. See Installation description, for when and what size of ring should be used.



El. no.	Title	Al-Round mm ²	AL-Sector mm ²	Cu Round mm ²	Bolt holes mm
20 200 87	C16-95/12	16-95	25-70	16-95	12
20 203 09	C16-95/16	16-95	25-70	16-95	16
20 200 88	C95-240/12	95-240	95-185	95-240	12
20 200 98	C95-240/16	95-240	95-185	95-240	16
20 200 99	C185-400/12	185-400	185-300	185-400	12
20 203 10	C185-400/16	185-400	185-300	185-400	16
20 199 53	C400-630/12	400-630	400-500	400-630	12
20 203 11	C400-630/16	400-630	400-500	400-630	16
20 203 12	C400-630/20	400-630	400-500	400-630	20
20 203 13	C630-1000/20	630-1000	x	630-800	20
20 002 29	C800-1200/20 (72kV)	630-1200	x	630-1000	20
20 203 14	C1600/4x16	1600	x	1600	4x16

Other sizes on request, tlf: +47 32 23 77 00, ProCab AS.